



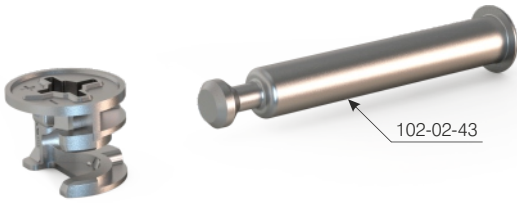
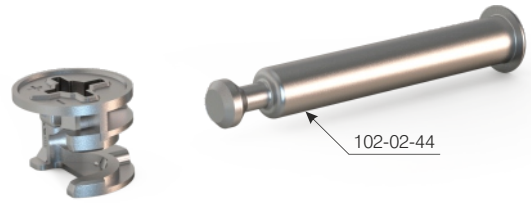


## Msfix Milleri / Msfix Bolts

SİPARİŞ KODU ORDER CODE	F	AÇIKLAMA / DESCRIPTION	A	 LxWxH	 Ad Pcs
				 kg	 Ad Pcs
102-02-43	403	Msfix Tek taraflı mil 50mm (16mm panel için) Msfix Capped Bolt (for 16mm chipboard) 50mm (steel)	16 mm	29 x 19 x 12	500
				17,000 kg	2.000
102-02-44	403	Msfix Tek taraflı mil 52mm (18mm panel için) Msfix Capped Bolt (for 18mm chipboard) 52mm (steel)	18 mm	29 x 19 x 12	500
				17,500 kg	2.000



102-02-43



102-02-44

